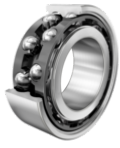


FAG

3203-BD-XL-TVH-C3

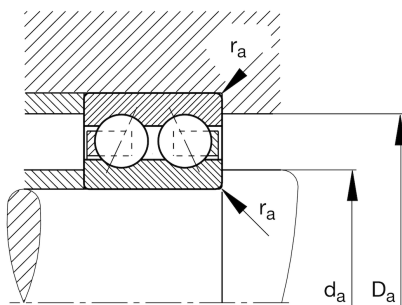
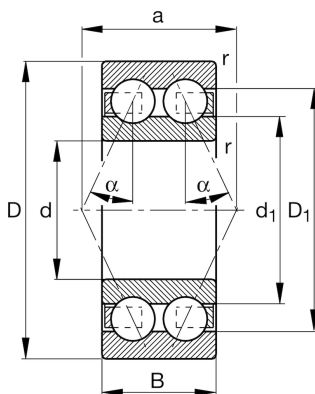
Angular contact ball bearing

Schaeffler ID:
0637149490030

Angular contact ball bearing 32..-BD-XL-TVH, double row, X-life, plastic cage

X-life

Technical information



Main Dimensions & Performance Data

d	17 mm	Bore diameter
D	40 mm	Outside diameter
B	17.5 mm	Width
C_r	15,500 N	Basic dynamic load rating, radial
C_{0r}	9,500 N	Basic static load rating, radial
C_{ur}	660 N	Fatigue load limit, radial
n_G	19,400 1/min	Limiting speed
n_{gr}	16,600 1/min	Reference speed
	0.091 kg	Weight

Mounting dimensions

$d_{a \min}$	21.2 mm	Minimum diameter shaft shoulder
$D_{a \max}$	35.8 mm	Maximum diameter of housing shoulder
$r_{a \max}$	0.6 mm	Maximum fillet radius

Dimensions

r_{\min}	0.6 mm	Minimum chamfer dimension
D_1	33.9 mm	Shoulder diameter outer ring
d_1	25.8 mm	Shoulder diameter inner ring
a	23.5 mm	Distance between the apexes of the pressure cones
α	30 °	Contact angle

Temperature range

T_{\min}	-30 °C	Operating temperature min.
T_{\max}	120 °C	Operating temperature max.